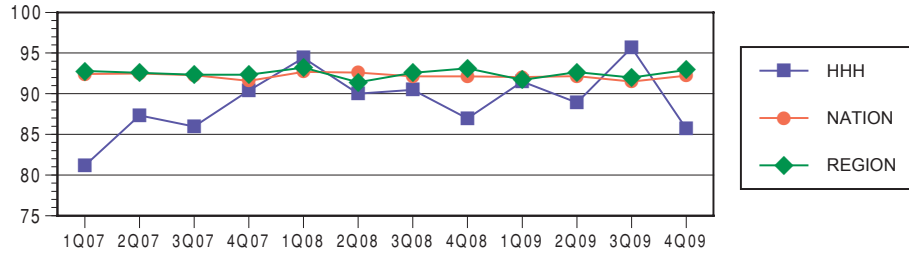


Tracking Outcomes at Helen Hayes Hospital: Joint Replacement

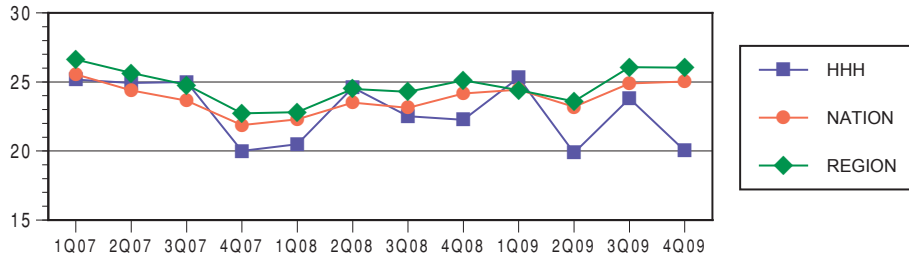
The most recent data obtained from ITHealth Track indicates that 98% of ortho patients surveyed were satisfied with the services they received at Helen Hayes Hospital. 100% were self sufficient with regard to their health care maintenance after discharge.

% Discharged to Community Setting



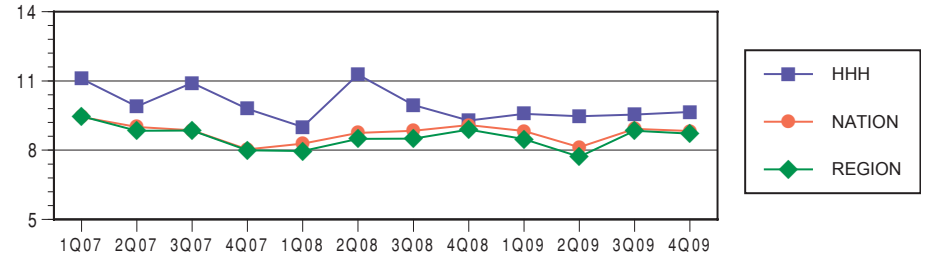
The percent of patients discharged to a community setting is graphed in the above chart. Many issues, including discharge support system, living environment, and functional status impact the discharge placement. At Helen Hayes Hospital we always discharge a patient safely and optimally to home.

FIM Change (Admission to Discharge)



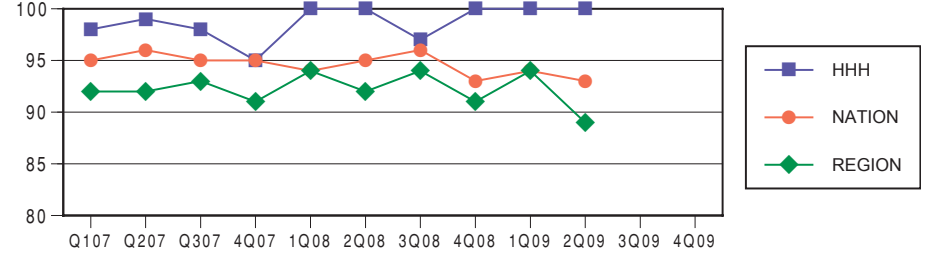
This chart indicates the average functional gain a joint replacement patient at Helen Hayes Hospital achieves. Gains may be affected by pre injury health status as well as other factors including severity of impairment. Our Goal is to assist patients in reaching their optimum level of functioning within acute rehabilitation guidelines.

Rehab LOS in Days



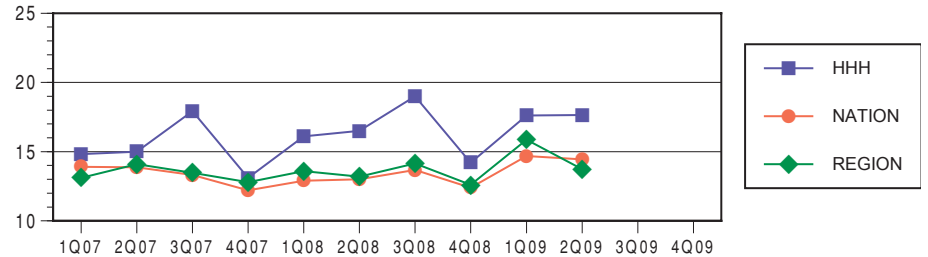
The average length of stay in days for patients at Helen Hayes Hospital varies according to their needs. An average length of stay is indicated above. The length of stay is determined by the progress a patient makes. Progress must be measurable and timely as per acute rehabilitation guidelines.

Percent of Responding Patients Residing in a Community Setting 90 Days Post Discharge



The above chart indicates that 90 days after discharge, among patients contacted, this percent of patients are living within a community setting. Helen Hayes Hospital patients continue to reside at home 90 days post discharge.

FIM Change Discharge to Follow Up



FIM change following discharge may continue. This chart shows the average functional gains made by patients who were contacted 90 days after discharge. Patients discharged from Helen Hayes Hospital continue to make functional gains due in part to the continuum of care services offered here at Helen Hayes Hospital.