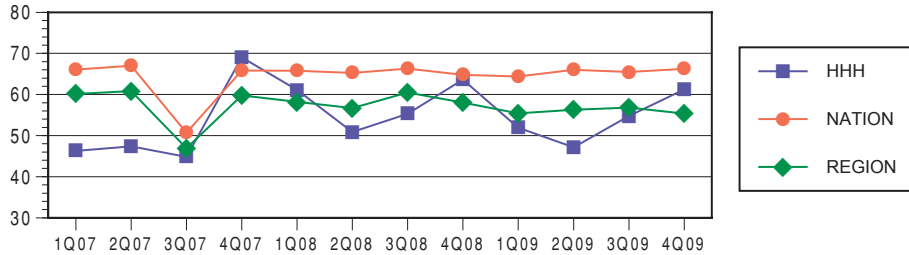


Tracking Outcomes at Helen Hayes Hospital: Stroke

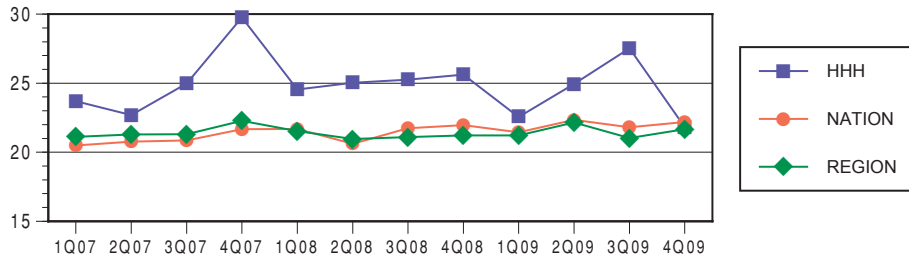
The most recent ITHealth Track data indicates that 99% of stroke patients surveyed report being very satisfied with the services they received at Helen Hayes Hospital. 81% of these patients were able to provide their own health care maintenance after discharge.

% Discharged to Community Setting



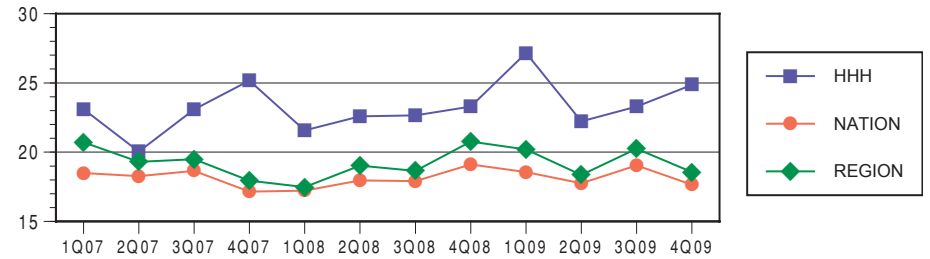
The percent of patients discharged to a community setting is graphed in the above chart. Many issues, including discharge support system, living environment and functional status impact the discharge placement. At Helen Hayes Hospital we always discharge a patient safely and optimally to home.

FIM Change (Admission to Discharge)



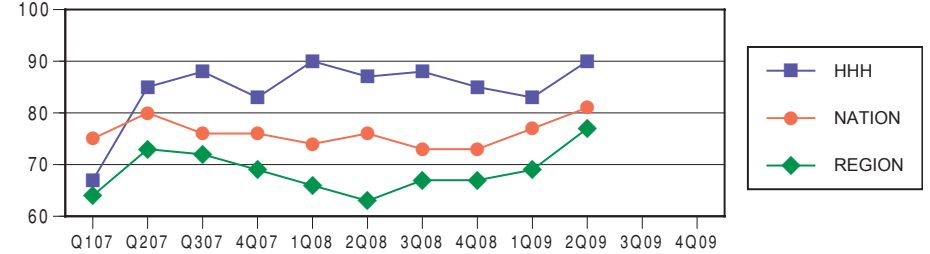
The above chart indicates the average functional gain stroke patients at Helen Hayes Hospital achieve. Gains may be affected by pre injury health status as well as other factors including severity of impairment. Our Goal is to assist patients in reaching their optimum level of functioning within acute rehabilitation guidelines. Our patients achieve a greater FIM change when compared to the nation and region.

Rehab LOS in Days



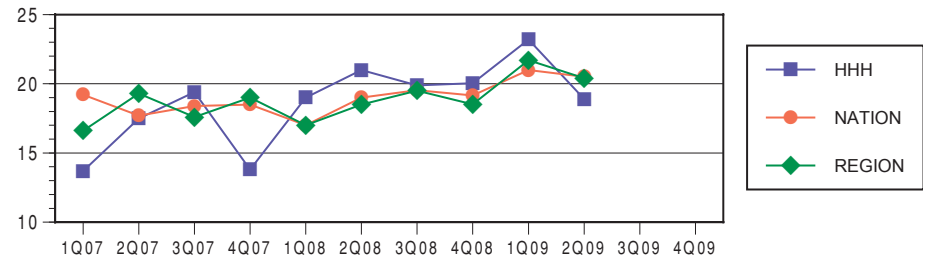
The average length of stay in days for stroke patients at Helen Hayes Hospital varies according to their needs. An average length of stay is indicated above. The length of stay is determined by the progress a patient makes. Progress must be measurable and timely as per acute rehabilitation guidelines.

Percent of Responding Patients Residing in a Community Setting 90 Days Post Discharge



This chart indicates that 90 days after discharge, among patients contacted, this percent of patients are living within a community setting. More Helen Hayes Hospital patients are residing at home 90 days post discharge when compared to the nation.

FIM Change Discharge to Follow Up



FIM change following discharge may continue. This chart shows the average functional gains made by patients who were contacted 90 days after discharge. Patients discharged from Helen Hayes Hospital continue to make functional gains due in part to the continuum of care services offered here at Helen Hayes Hospital.