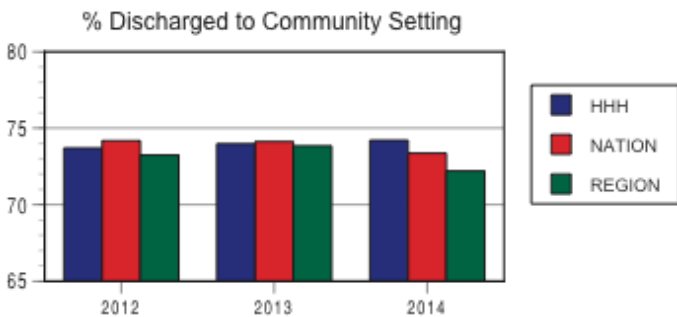
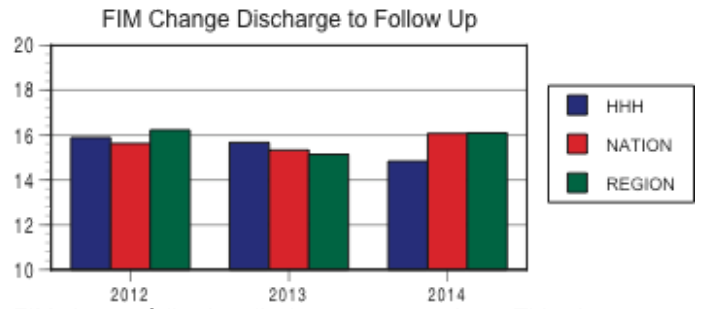


Tracking Outcomes at Helen Hayes Hospital: Facility

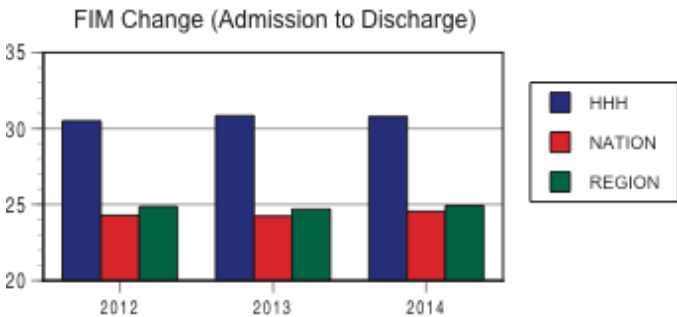
The most recent data obtained from ITHHealth Track indicates that 96% of patients surveyed were very satisfied with their services at Helen Hayes Hospital. 98% of patients were able to meet their own health care needs after discharge.



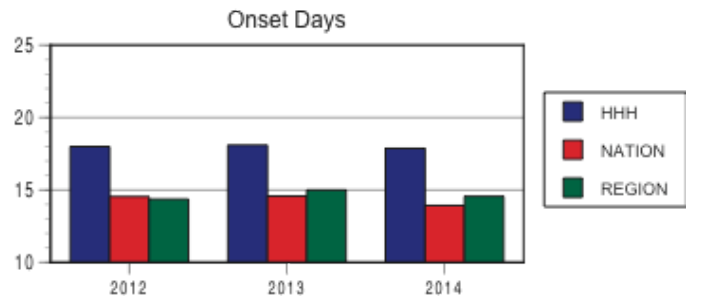
The percent of patients discharged to a community setting is graphed in the above chart. Many issues, including discharge support system, living environment, and functional status, impact the discharge placement. At Helen Hayes Hospital we always discharge a patient safely and optimally to home.



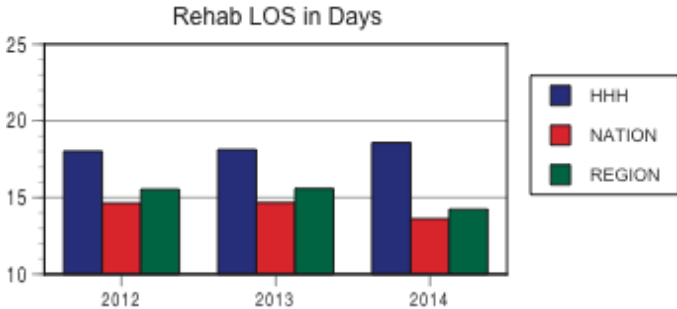
FIM change following discharge may continue. This chart shows the average functional gains made by patients who were contacted 90 days after discharge. The amount of gain may vary related to level of independence at discharge. Patients discharged from Helen Hayes Hospital continue to make functional gains due in part to the continuum of care services offered at Helen Hayes Hospital.



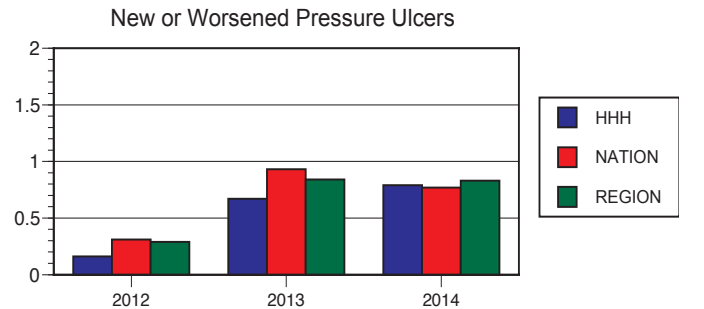
This chart indicates the average functional gain patients at Helen Hayes Hospital achieve. Gains may be affected by pre injury health status as well as other factors including severity of impairment. Our goal is to assist patients in reaching their optimum level of functioning within acute rehabilitation guidelines and the outcomes above show the greater gains patients achieve at Helen Hayes Hospital.



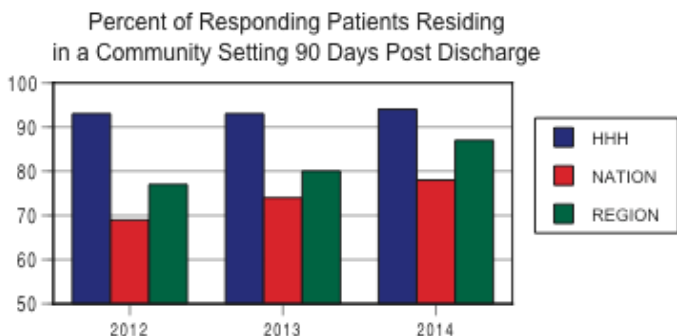
Onset days are indicators of access to therapy. Access to therapy may be extended due to insurance, time spent in acute care or lack of appropriate services within the community. At HHH we may admit patients who spend longer time in acute care, we work hard to ensure that access to our services are available to all appropriate patients.



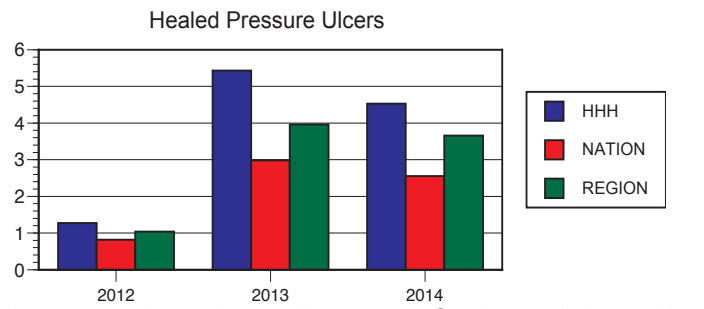
The average length of stay in days for patients at Helen Hayes Hospital varies according to their needs. An average length of stay is indicated above. The length of stay is determined by the progress a patient achieves. Progress must be measurable and timely as per acute rehabilitation guidelines.



The chart above indicates the percent of patients who develop new or worsened pressure ulcers. Fewer patients at Helen Hayes Hospital develop pressure ulcers.



The above chart indicates that 90 days after discharge, among patients contacted, this percent of patients are living within a community setting. More Helen Hayes Hospital patients are residing at home 90 days post discharge when compared to the nation and region.



The above chart indicates the percent of patients admitted with pressure ulcers who then are discharged with those pressure ulcers healed. At Helen Hayes Hospital we heal a greater percent of pressure ulcers than the nation and the region.